

# SAMSHA's Strategic Prevention Framework

## GUIDING PRINCIPLES

### Cultural competence

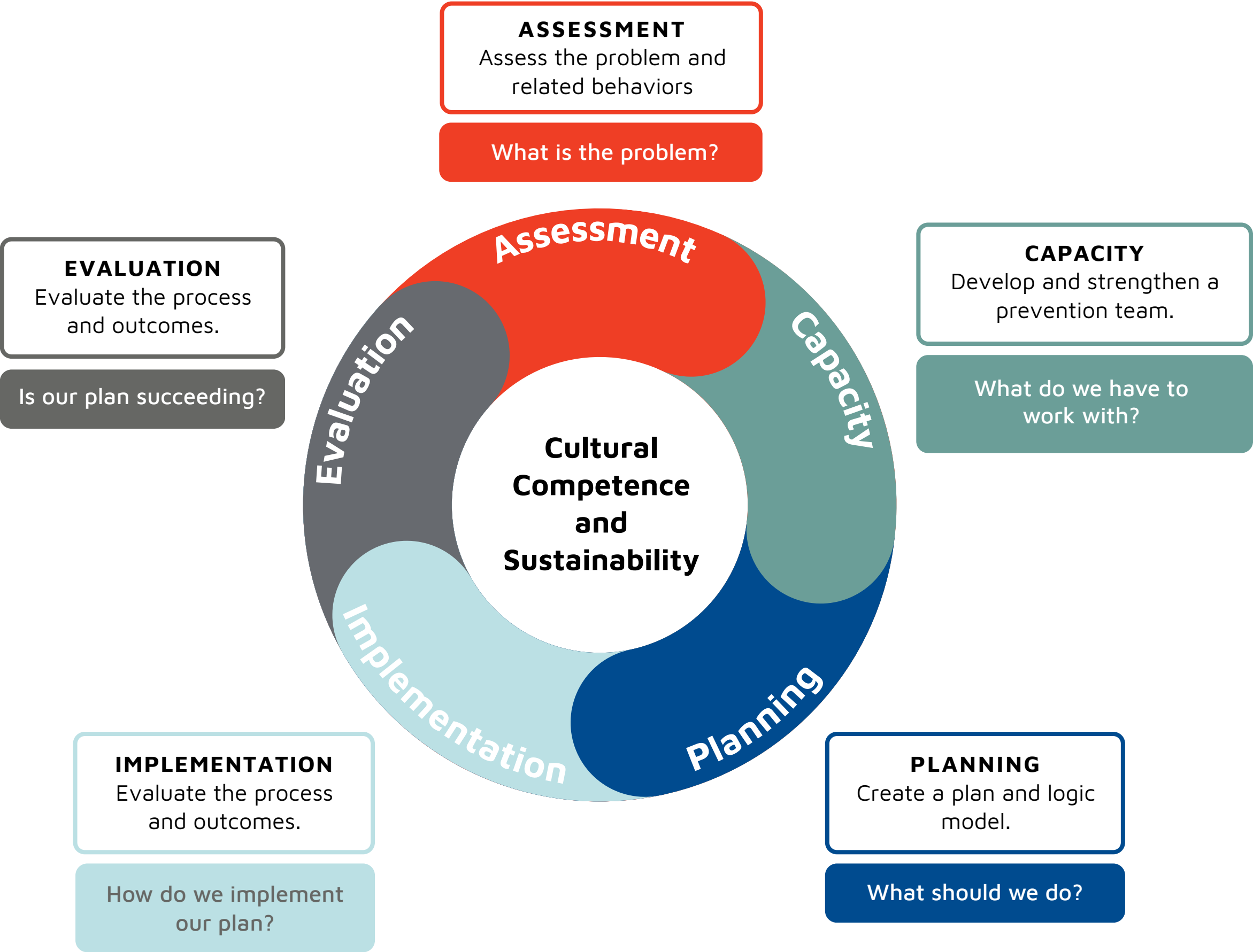
Be inclusive and engage in a culturally appropriate manner

### Sustainability

Ensure that programs work for years to come



Prevention  
Action Alliance



Source: A Guide to SAMSHA's Strategic Prevention Framework. Substance Abuse and Mental Health Services Administration.